

5506XXX

NOTE:
 (1) PN 5506XXX COVERS 5506BBC & 5506XXC ASSEMBLIES.
 (2) REFER TO THE BOM IN WINMAGI FOR COLOR SPECS ON THE ASSEMBLIES.
 (3) BOXED ITEMS ARE FOR LOOSE PARTS PACK.

REV	ECO	REVISION DESCRIPTION	BY	CKD	DATE
L	3628	(1) REM 555477 (2) ADD NOTE	AJS	DLK	11/3/18

DIMENSIONS ARE IN INCHES
 DIMENSIONS IN [] ARE MILLIMETERS
 BREAK SHARP EDGES .005-.015 [.10-.40]
 MACHINED SURFACE FINISH IS
 63 MICROINCHES [1.6 MICROMETERS]
 DO NOT SCALE DRAWING

KEISER[®]
 2470 South Cherry Ave. Phone: (559) 256-8000
 Fresno, CA, USA 93706-5004 Fax: (559) 256-8100
 THE INFORMATION DISCLOSED HEREIN WAS ORIGINATED BY
 AND IS THE PROPERTY OF KEISER CORP. AND ALL PATENT,
 PROPRIETARY, DESIGN, USE, SALE, MANUFACTURING, AND
 REPRODUCTION RIGHTS THERETO ARE RESERVED BY KEISER
 CORP.

DRAWN BY: JPR	DATE DRAWN: 4/22/14	CHECKED BY: DEM	DATE CHECKED: 5/3/14
MATERIAL: RAW MAT:			
TITLE: M3i - FTB HB		SHEET 1 OF 4	
SCALE: 1:14		DRAWING SIZE: B PART#: 5506XXX	

PRINTED ON: 11/5/2018 SW2006 V5.1

X:\drawings\REVISION\55_EC_RWD_BIKEI

XXX9099

ITEM NO.	QTY.	PART NO.	TITLE	ITEM NO.	QTY.	PART NO.	TITLE	ITEM NO.	QTY.	PART NO.	TITLE
1	1	9062	SCREW - CRFCHMS 10-32 X 1/2 SS	51	1	555002	GIB - SEAT	101	2	555418	BEARING - 6203ZZ-SHIELDED
2	1	9082	WASHER - BONDED #10 SS	52	1	555003	FLYWHEEL	102	2	555419	SCREW - HSPPSS-M10x1.5 X 16 BLK
3	7	9253	SCREW - CRPHMS #10-32 X 3/16 SS	53	1	555004	HUB - FLYWHEEL	103	1	555420	SWEAT STRIP - 5/16 X 3/8
4	2	9261	SCREW - CRPHMS 10-32 X 3/8 SS	54	1	555005	HUBCAP - FLYWHEEL	104	1	555421	CRANK ARM - L
5	2	9279	SCREW - SBHTS-TF 5/16-18 X 3/4 ZP	55	1	555008	MAGNET COVER	105	1	555424	CRANK ARM - R
6	1	9287	SCREW - CRPHTS 10-24 X 3/4 SS	56	1	555009	SLIDER - SEAT	106	1	555427	AXLE - BOTTOM BRACKET-HOLLOW
7	3	9303	SCREW - CRPHTCS-T25 4 X 3/8 SS	57	1	555011	PLATE - MAGNET SUPPORT	107	2	555428	SCREW - HWHS-M8X1 X 60 CS
8	1	9304	SCREW - CRFCS-PLASTITE 4-20 X 3/8 SS	58	1	555012	PULLEY - 330MM	108	2	555446	WHEEL - 3 IN-W/BUSHING
9	3	9333	SCREW - SBHTS-TF 5/16-18 X 1 ZP	59	1	555017	MOUNT - DISPLAY-COMPUTER	109	2	555448	GRIP - HANDLEBAR-NEUTRAL-ADJ
10	2	9344	WASHER - FW-USS 5/16 ZP	60	4	555022	NUT - HAN-HC-7/16-20 SS	110	1	555457	SADDLE - M3X
11	4	9369	WASHER - ACFT 5/16 SS	61	4	555023	SCREW - HHCS-7/16-20 X 3 SS	111	2	555460	RETAINING RING - INT-42MM
12	4	9384	WASHER - FW-ACFT 7/16 SS	62	2	555025	CLAMP - WHEEL GUARD	112	1	555473	PEDAL SET - COMBO-KEISER
13	2	9391	WASHER - FW-ACFT 1/4 SS	63	1	555026	BOTTOM SLIDE - HANDLEBAR ADJ	113	1	555518	MANUAL - USER-M3i
14	2	9397	WASHER - BONDED 5/16 SS	64	1	555031	SPACER - HANDLEBAR ADJ	114	2	565407	COVER-SQ PIN HOLE
15	7	9500	SCREW - SHCS M6x1 X 10 SS	65	2	555037	SPACER - 032039114	115	2	605051	PLUG - GRIP
16	6	9501	SCREW - SHCS M6x1 X 16 SS	66	1	555039	PIN - MF-5/16 SQ X 2 1/8	116	2	966502	BATTERY - AA CELL
17	1	9508	NUT - HN M6X1 SS	67	2	555048	PLATE - FRICTION W/HOLE	117	1	990837	STABILIZER - FRAME
18	4	9509	NUT - HELN M6X1 ZP	68	1	555049	TUBE - SEAT	118	3	995076	SPACER - BUMPER
19	2	9511	SCREW - HHCS M8X1.25 X 16 ZP	69	1	555051	COVER - BELT-MAIN	119	1	995322	DECAL - BASE STABILIZER ADJ-M SERIES
20	2	9516	SCREW - SBHCS M8x1.25 X 45 SS	70	1	555052	COVER - BELT-INNER	120	1	995375	DECAL - PART 15-FCC
21	2	9519	NUT-HAN-HC M8x1.25 SS	71	1	555053	GEAR - POT	121	3	995418	BAG - 4 X 6 X 4MIL-ZIP LOCK
22	2	9524	SCREW - SBHCS M8x1.25 X 16 SS	72	1	555054	SHIFTER - R				
23	1	9525	SCREW - HHCS M6X1 X 45 SS	73	1	555055	SHIFTER - L				
24	1	9532	SCREW-CRPHMS 4-40 X 3/8 SS	74	2	555058	BUSHING - SHORT				
25	4	9536	SCREW - SHCS M8x1.25 X 16 SS	75	1	555066	PULLEY - IDLER-MOLDED				
26	1	9546	SCREW - CRPHMS 10-32 X 5/16 SS	76	1	555073	CAP - WHEEL GUARD-BOT				
27	5	9547	SCREW - SHCS M6X1 X 18 SS	77	2	555074	HANDLE - L-BLACK				
28	1	9982	NUT-HEAVY SQ. 3/8-16 SS	78	2	555075	HANDLE - STUD-BLACK				
29	3	105423	BUMPER - MOLDED GLIDE	79	2	555076	CAP - M6 SHCS-BLACK				
30	1	105550	THREAD SEALANT - LOCTITE 242	80	1	555077	COVER - LOWER-MAIN FRAME-SHORT				
31	2	115054	PLUG - 2 IN SQ-KEISER	81	1	555078	GUARD - SWEAT-HANDLEBAR-SHORT				
32	1	215502	RETAINING RING - 1.70 OD	82	1	555080	COVER - DISPLAY MT				
33	1	505063	PIN - HANDLEBAR-1/4 X 1-3/4	83	1	555081	FACE - DISPLAY-COMPUTER-BT				
34	6	505068	BUSHING - 4 PIECE	84	1	555085	MEDIA HOLDER - M3i				
35	2	505480	RIVET - 1/4 X 3/4 REM PLUG	85	1	555095	NECK - DISPLAY-COMPUTER-BT				
36	1	543080	SPACER - BEARING-FLYWHEEL	86	2	555101	STRETCH PAD - SINGLE				
37	2	543091	HOSE - SPACER-LONG	87	1	555371	DECAL - CAUTION-PEDAL TORQUE				
38	1	550842	BOXING KIT - M3-FTB HB	88	1	555376	DECAL - WARNING-HEART RATE				
39	2	550847	PLUNGER KNOB	89	1	555385	DECAL - DOME-KEISER M3i				
40	1	550871	BACK - DISPLAY-COMPUTER-BT	90	1	555386	DECAL - HANDLEBAR-POSITION-BLK				
41	1	550873	COMPUTER - BL-BT	91	1	555387	DECAL - WARNING - USAGE				
42	1	550900	FRAME - MAIN	92	1	555389	DECAL - SERIAL NUMBER-M3i				
43	1	550901	FRAME - BASE	93	2	555402	BEARING - 6004ZZ-SHIELDED				
44	1	550911	CKT BRD - PICKUP	94	1	555403	MAGNET - CYL-3.20 X 9.53 MM GR N45				
45	1	550917	HANDLEBAR - NEUTRAL-ADJUSTABLE	95	2	555404	MAGNET - 25 X 9.5 MM				
46	1	550922	SLIDE MT - TUBE	96	1	555405	SPRING - TORSION				
47	1	551751	YOKE - MAGNET HOLDER	97	1	555406	BELT - POLY V				
48	1	553101	TUBE - WHEEL GUARD-270	98	1	555410	PAD - BRAKE-FRICTION				
49	1	554500	SUPPORT - MAGNET HOLDER	99	1	555411	SHIFT CABLE				
50	2	554997	THREADED INSERT - 3/4 X 1/2 SS	100	1	555413	CORD - COMP TO PICKUP				

L1

PRINTED ON: 11/5/2018 SW2006 V5.1

X:\drawings_REVISION\55_EC_RWD_BIKEI



2470 South Cherry Ave. Phone: (559) 256-8000
 Fresno, CA, USA 93706-5004 Fax: (559) 256-8100

THE INFORMATION DISCLOSED HEREIN WAS ORIGINATED BY AND IS THE PROPERTY OF KEISER CORP. AND ALL PATENT, PROPRIETARY, DESIGN, USE, SALE, MANUFACTURING, AND REPRODUCTION RIGHTS THERETO ARE RESERVED BY KEISER CORP.

DIMENSIONS ARE IN INCHES
 DIMENSIONS IN [] ARE MILLIMETERS
 BREAK SHARP EDGES .005-.015 (.10-.40)
 MACHINED SURFACE FINISH IS
 63 MICROINCHES [1.6 MICROMETERS]
 DO NOT SCALE DRAWING

DRAWN BY: JPR DATE DRAWN: 4/22/14 CHECKED BY: DEM DATE CHECKED: 5/3/14

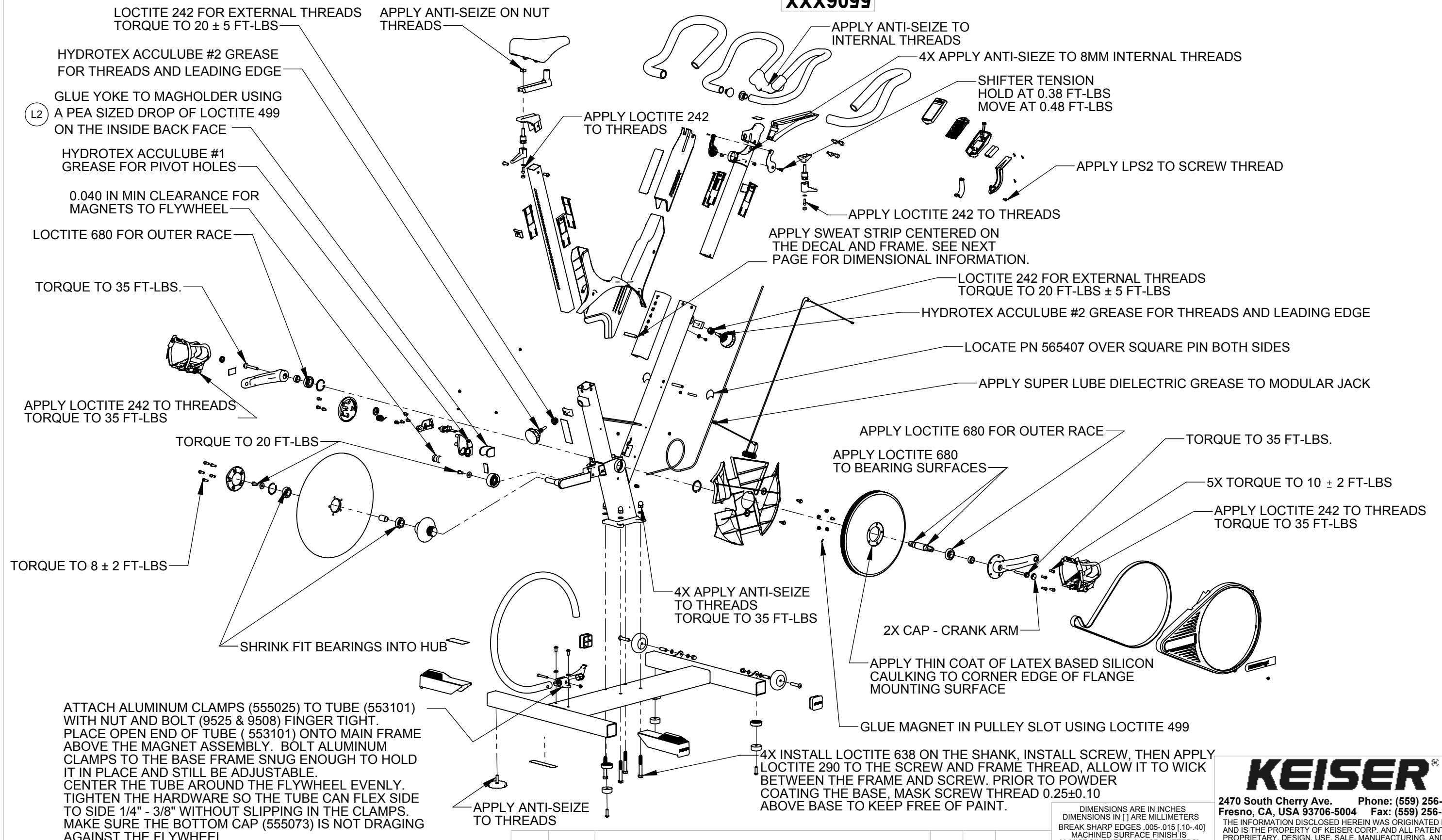
MATERIAL: RAW MAT:

TITLE: M3i - FTB HB

SHEET 2 OF 4 SCALE: 1:14 DRAWING SIZE: B PART#: 5506XXX

REV	ECO	REVISION DESCRIPTION	BY	CKD	DATE
L	3628	(1) REM 555477 (2) ADD NOTE	AJS	DLK	11/3/18

XXX9099



ATTACH ALUMINUM CLAMPS (555025) TO TUBE (553101) WITH NUT AND BOLT (9525 & 9508) FINGER TIGHT. PLACE OPEN END OF TUBE (553101) ONTO MAIN FRAME ABOVE THE MAGNET ASSEMBLY. BOLT ALUMINUM CLAMPS TO THE BASE FRAME SNUG ENOUGH TO HOLD IT IN PLACE AND STILL BE ADJUSTABLE. CENTER THE TUBE AROUND THE FLYWHEEL EVENLY. TIGHTEN THE HARDWARE SO THE TUBE CAN FLEX SIDE TO SIDE 1/4" - 3/8" WITHOUT SLIPPING IN THE CLAMPS. MAKE SURE THE BOTTOM CAP (555073) IS NOT DRAGGING AGAINST THE FLYWHEEL.

NOTE:
UNSPECIFIED TOLERANCE IS ±5 FT-LBS

DIMENSIONS ARE IN INCHES
DIMENSIONS IN [] ARE MILLIMETERS
BREAK SHARP EDGES .005-.015 [.10-.40]
MACHINED SURFACE FINISH IS
63 MICROINCHES [1.6 MICROMETERS]
DO NOT SCALE DRAWING

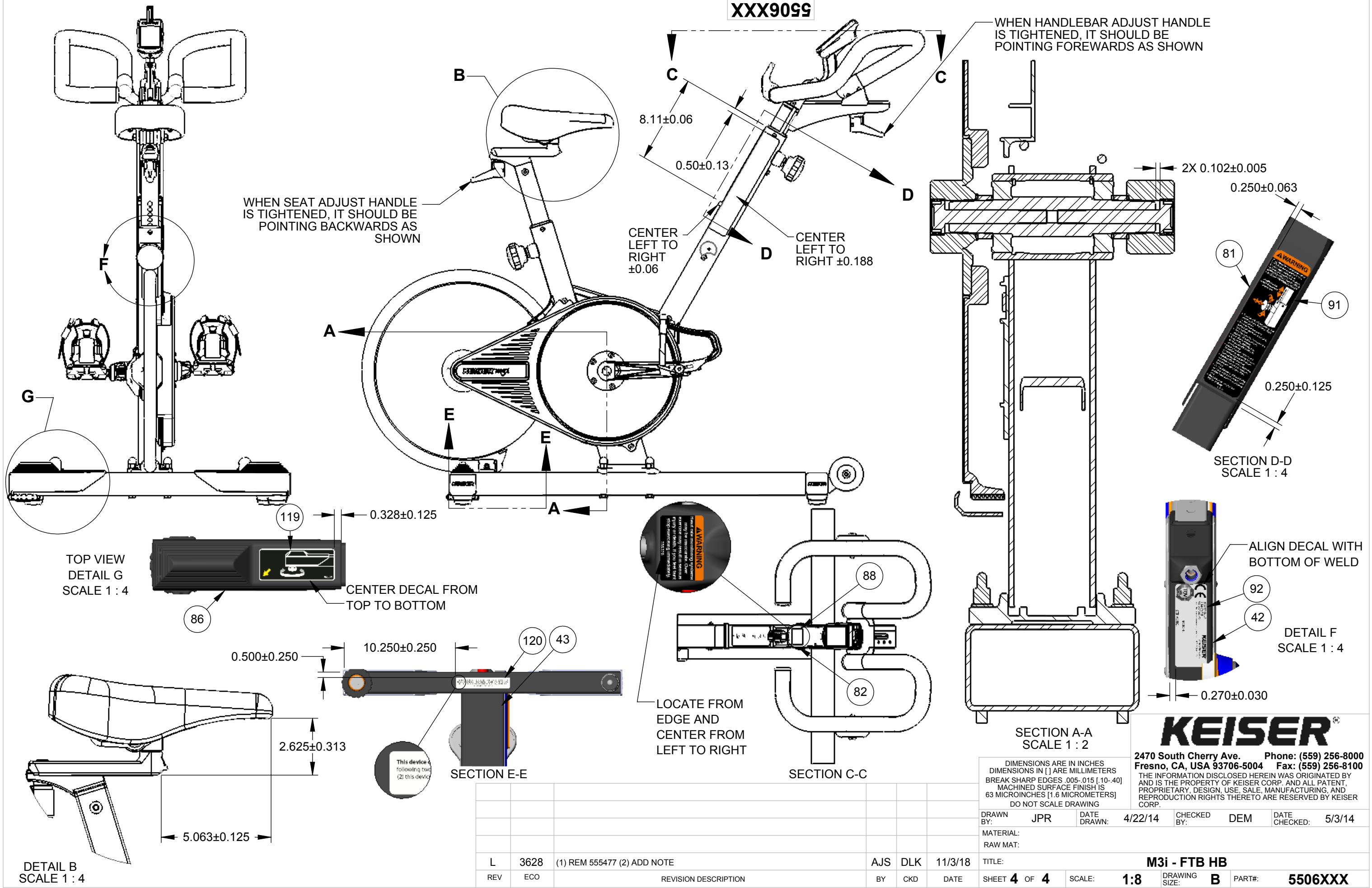
KEISER
2470 South Cherry Ave. Phone: (559) 256-8000
Fresno, CA, USA 93706-5004 Fax: (559) 256-8100
THE INFORMATION DISCLOSED HEREIN WAS ORIGINATED BY AND IS THE PROPERTY OF KEISER CORP. AND ALL PATENT, PROPRIETARY, DESIGN, USE, SALE, MANUFACTURING, AND REPRODUCTION RIGHTS THERETO ARE RESERVED BY KEISER CORP.

DRAWN BY: JPR	DATE DRAWN: 4/22/14	CHECKED BY: DEM	DATE CHECKED: 5/3/14
MATERIAL: RAW MAT:			
TITLE: M3i - FTB HB		DRAWING SIZE: B	
SHEET 3 OF 4		SCALE: 1:14	
BY: AJL DLK		PART#: 5506XXX	

REV	ECO	REVISION DESCRIPTION	BY	CKD	DATE
L	3628	(1) REM 555477 (2) ADD NOTE	AJS	DLK	11/3/18

X:\drawings\REVISION\55_EC_RWD_BIKEI PRINTED ON: 11/5/2018 SW2006 V5.1

XXX9099



WHEN HANDLEBAR ADJUST HANDLE IS TIGHTENED, IT SHOULD BE POINTING FORWARDS AS SHOWN

WHEN SEAT ADJUST HANDLE IS TIGHTENED, IT SHOULD BE POINTING BACKWARDS AS SHOWN

CENTER LEFT TO RIGHT ±0.06
CENTER LEFT TO RIGHT ±0.188

SECTION D-D SCALE 1 : 4

TOP VIEW DETAIL G SCALE 1 : 4

CENTER DECAL FROM TOP TO BOTTOM

LOCATE FROM EDGE AND CENTER FROM LEFT TO RIGHT

SECTION A-A SCALE 1 : 2

ALIGN DECAL WITH BOTTOM OF WELD

DETAIL F SCALE 1 : 4

DETAIL B SCALE 1 : 4

SECTION E-E

SECTION C-C

DIMENSIONS ARE IN INCHES
DIMENSIONS IN [] ARE MILLIMETERS
BREAK SHARP EDGES .005-.015 [.10-.40]
MACHINED SURFACE FINISH IS 63 MICROINCHES [1.6 MICROMETERS]
DO NOT SCALE DRAWING

KEISER
2470 South Cherry Ave. Phone: (559) 256-8000
Fresno, CA, USA 93706-5004 Fax: (559) 256-8100
THE INFORMATION DISCLOSED HEREIN WAS ORIGINATED BY AND IS THE PROPERTY OF KEISER CORP. AND ALL PATENT, PROPRIETARY, DESIGN, USE, SALE, MANUFACTURING, AND REPRODUCTION RIGHTS THERE TO ARE RESERVED BY KEISER CORP.

DRAWN BY: JPR DATE DRAWN: 4/22/14 CHECKED BY: DEM DATE CHECKED: 5/3/14

MATERIAL: RAW MAT:

L	3628	(1) REM 555477 (2) ADD NOTE	AJS	DLK	11/3/18	TITLE:	M3i - FTB HB
REV	ECO	REVISION DESCRIPTION	BY	CKD	DATE	SHEET 4 OF 4	SCALE: 1:8 DRAWING SIZE: B PART#: 5506XXX

PRINTED ON: 11/5/2018 SW2006 V5.1

X:\drawings\REVISION55_EC_RWD_BIKEI